



## Ride the Waves with Sound You Can Sea

7-way Rotary Volume Control and 20 Key Remote with  
Built-in Parrot Bluetooth Module and Works with PANDORA®

**M502**

CEA 2006 Power Ratings  
19W x 4 RMS [4Ω @ 14.4V ±1% THD+N]  
S/N 83dB (Ref: 1W into 4Ω)

Marine Mechanism-less Bluetooth Receiver

**CMD6**

CEA 2006 Power Ratings  
21W x 4 RMS [4Ω @ 14.4V ±1% THD+N]  
S/N 91dB (Ref: 1W into 4Ω)

Watertight Marine CD/USB Receiver with CeNET Control



Engineered to Withstand  
Water and Salt (CMV1/  
CMD6/CMD7/CMS1)



Stainless Steel for  
Durability Behind the  
Scenes (CMV1/  
CMD6/M309)

## Essential Functions and Quality with Added Reliability

**M309**

CEA 2006 Power Ratings  
21W x 4 RMS [4Ω @ 14.4V ±1% THD+N]  
S/N 91dB (Ref: 1W into 4Ω)

Marine CD/USB Receiver with CeNET Control



Hideaway Source Unit for  
Unique Applications

**CMS1**

CEA 2006 Power Ratings  
16W x 4 RMS [4Ω @ 14.4V ±1% THD+N]  
S/N 74dB (Ref: 1W into 4Ω)

Digital Media Receiver with Watertight Commander



Watertight Digital  
Media Source Unit



Just connect your  
iPod using the  
optional CCUIPOD2  
cable for full control  
from the source unit.



• Suction or Screw-In  
Mounting  
• Multi-Angle Adjustable

Clarion is a Leading Brand in Marine Audio. One of  
the First to Offer Marine Source Units with Video  
Playback on an Integrated Screen.

**CMV1**

CEA 2006 Power Ratings  
17W x 4 RMS [4Ω @ 14.4V ±1% THD+N]  
S/N 77dB (Ref: 1W into 4Ω)

Watertight Marine DVD/CD/USB Receiver with CeNET Control

**CMD7**

CEA 2006 Power Ratings  
19W x 4 RMS [4Ω @ 14.4V ±1% THD+N]  
S/N 80 dB (Ref: 1W into 4Ω)

Watertight Marine CD/USB Receiver



Optional

## Feature Comparison

	DVD Video	iPod® & iPhone® Control	Built-in Bluetooth	SiriusXM- Ready™	Sirius Direct Connect	XM Ready	PANDORA internet radio	BBE®MP	Audio Format	USB	Z-Enhancer Plus	Beat EQ	MAGNA BASS EX	Parametric EQ	AUX Input	Output	Fixed Audio Output	Water tight Chassis	Wired Remote Ready
CMV1	●	iPod Video	—	—	●*2	—	—	●	MP3/WMA/ AAC	Rear	—	—	—	—	Rear x 2	2V/8ch	●	●	●
CMD6	—	iPod	—	—	●*2	—	—	●	MP3/WMA/ AAC	Rear	—	—	—	—	Rear x 2	2V/8ch	●	●	●
CMD7	—	●	—	—	●*2	—	—	—	MP3/WMA	Rear	—	●	●	●	Rear	2V/4ch	—	—	●
M502	—	●	Parrot	●*1	—	—	—	—	MP3/WMA	Rear	—	●	●	●	Rear	2V/4ch	—	—	●
M309	—	iPod	—	—	●*2	—	—	●	MP3/WMA/ AAC	Rear	—	—	—	—	Front/Rear	2V/8ch	—	—	●
M109	—	—	—	—	—	—	—	—	MP3/WMA	—	●	—	●	●	Front	2V/4ch	—	—	—
CMS1	—	iPod	—	—	●*2	—	—	—	MP3/WMA	Rear	—	—	—	—	Rear	2V/2ch	—	●	●

\* For functional details please visit the Clarion website. \*1 SiriusXM-Connect Vehicle Tuner \*2 SiriusConnect™ Vehicle Tuner (SCC1)

## Engineered to Make Serious Waves

## MARINE AMPLIFIERS

**XC** SERIES  
CLASS D AMPLIFIERS



XC6410

## Small Compact Size



XC6210

• XC Amplifiers are Compatible for Automotive Use.

## MARINE SPEAKERS

**CMG** SERIES



CMG2510W



CMG1620S



CMG1621R



CMG1721R

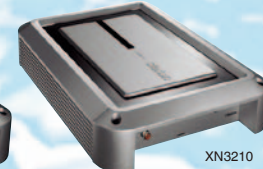
## Feature Comparison

	Maximum Power Output	4-Ohm	2-Ohm	Type	Number of Channels	Dimensions (W" x L" x H")	CEA 2006 Power Ratings
XC6410	600W	85W x 4	125W x 4	Class D	4/3/2	8-3/4 x 6-7/8 x 2-3/16	150W x 4 RMS [2Ω @ ≤ 14.4V 1% THD+N] 85W x 4 RMS [4Ω @ ≤ 14.4V 1% THD+N] S/N 80dB (Ref: 1W into 4Ω)
XC6210	350W	85W x 2	125W x 2	Class D	2/1	6-3/8 x 6-7/8 x 2-3/16	150W x 2 RMS [2Ω @ ≤ 14.4V 1% THD+N] 85W x 2 RMS [4Ω @ ≤ 14.4V 1% THD+N] S/N 80dB (Ref: 1W into 4Ω)
XN3410	720W	90W x 4	165W x 4	Class AB	4/3/2	15-3/4 x 9 x 2-5/8	110W x 4 RMS [4Ω @ 14.4V ±1% THD+N] S/N 97dB (Ref: 1W into 4Ω)
XN3210	360W	90W x 2	160W x 2	Class AB	2/1	13 x 9 x 2-5/8	100W x 2 RMS [4Ω @ 14.4V ±1% THD+N] S/N 95dB (Ref: 1W into 4Ω)

**XN** SERIES  
CLASS AB AMPLIFIERS



XN3410



XN3210

## Feature Comparison

	Size	Maximum Power	Type	CEA-2031 Speaker Rating
CMG2510W	10"	250W	Water-Resistant Subwoofer	Maximum RMS Power: 100 watts Impedance: 4 ohms
CMG1620S	6-1/2"	90W	Water Resistant 2-Way Component Speaker System	Maximum RMS Power: 35 watts Impedance: 4 ohms
CMG1621R	6-1/2"	90W	Water-Resistant 2-Way Coaxial	Maximum RMS Power: 35 watts Impedance: 4 ohms
CMG1721R	7"	90W	Water-Resistant 2-Way Coaxial	Maximum RMS Power: 35 watts Impedance: 4 ohms

## PERFORMANCE SUBWOOFERS/SPEAKERS

**CMQ** SERIES



CMQ2510W



CMQ1620R



CMQ1720R



CMQ6930R

## Feature Comparison

	Size	Maximum Power	Type	CEA-2031 Speaker Rating
CMQ2510W	10"	300W	Water-Resistant Subwoofer	Maximum RMS Power: 140 watts Impedance: 4 ohms
CMQ1620R	6-1/2"	100W	Water-Resistant 2-Way Coaxial	Maximum RMS Power: 50 watts Impedance: 4 ohms
CMQ1720R	7"	120W	Water-Resistant 2-Way Coaxial	Maximum RMS Power: 60 watts Impedance: 4 ohms
CMQ6930R	6" x 9"	120W	Water-Resistant 3-Way Multiaxial	Maximum RMS Power: 60 watts Impedance: 4 ohms

## ILLUMINATED GRILLE / REMOTE CONTROL



**CML2500**  
Illumination Grille for  
10" Marine Subwoofer



**CML1600**  
Illumination Grille for  
6-1/2" Marine Speaker

## System Control from Anywhere Onboard

**MW1**  
Watertight Marine  
Remote Control  
with LCD  
for CMD6/CMD7/CMS1/  
CMV1/M309/M502



**MW2**  
Watertight Marine  
Remote Control  
for CMD6/CMD7/  
CMS1/CMV1/M309/  
M502



**MF1**  
RF Wireless  
Remote Control  
for CMD6/CMD7/  
CMS1/CMV1/M309/  
M502



## OPTIONAL ACCESSORIES

