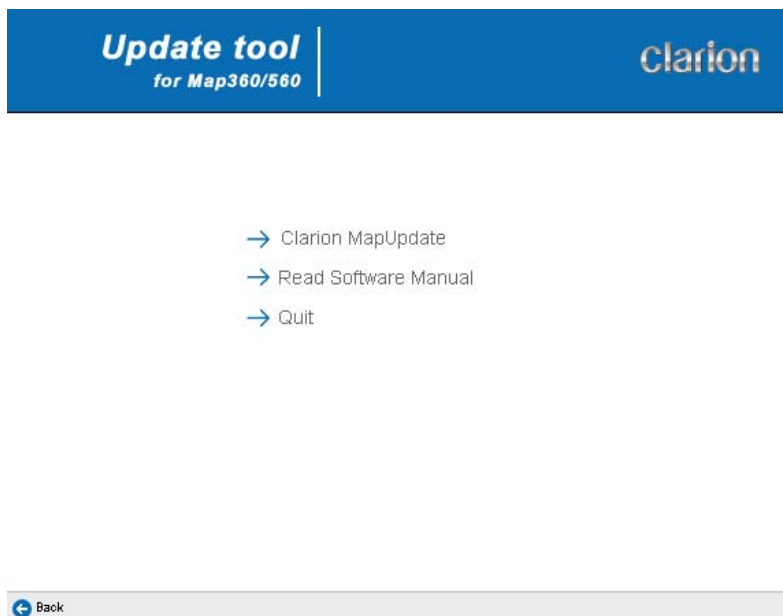


## Prepare your device for using the new navigation software:

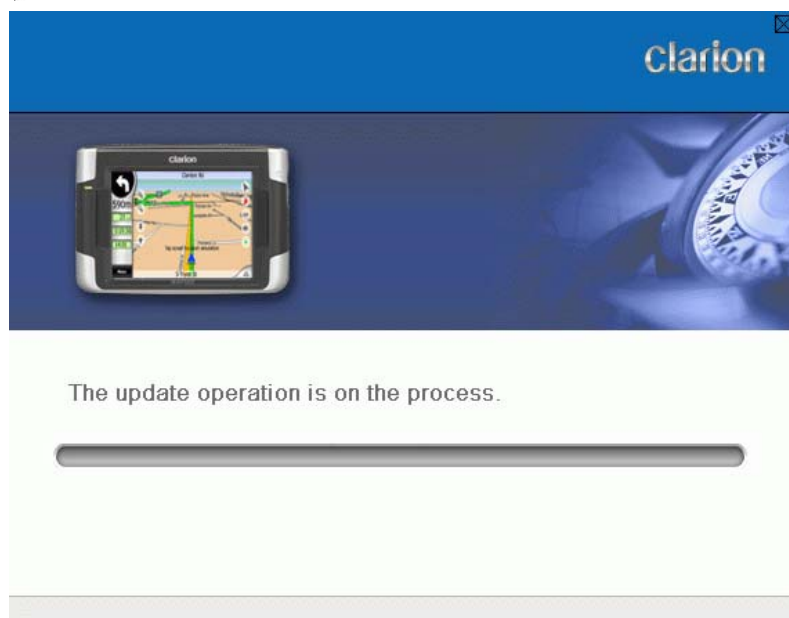
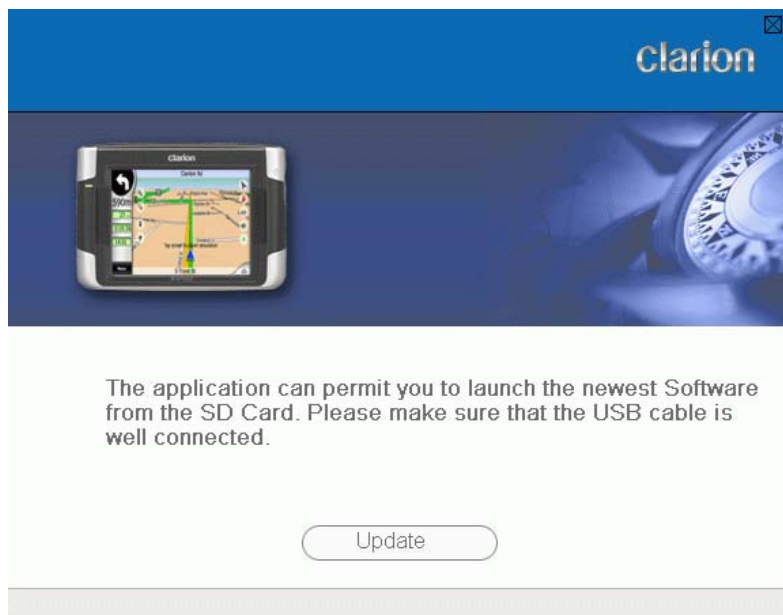
1. Insert the ESD560 card to the SD slot of your MAP360/MAP560
2. Connect your device to a computer. Make sure that ActiveSync is up and running.
3. Insert the ESD560 CD (8cm) into the CD-ROM drive of the computer.
4. The language selection screen appears. Select the language to be displayed for the installation.



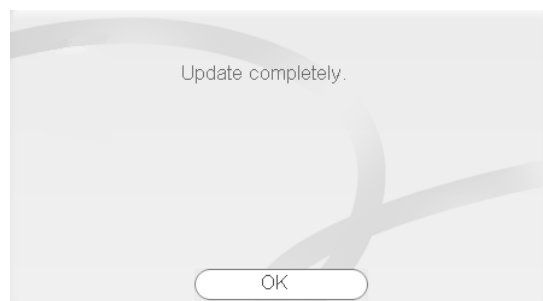
5. When the main menu appears, select **Clarion MapUpdate**.



6. Select **Update**.



7. After the update is completed, a message will appear. Click **OK** and your device automatically restarts.



### Use the new navigation software:

After you have completed the above procedure, you can use the new navigation software with the ESD560 SD card inserted.

Simply insert the ESD560 SD card before running the navigation software.

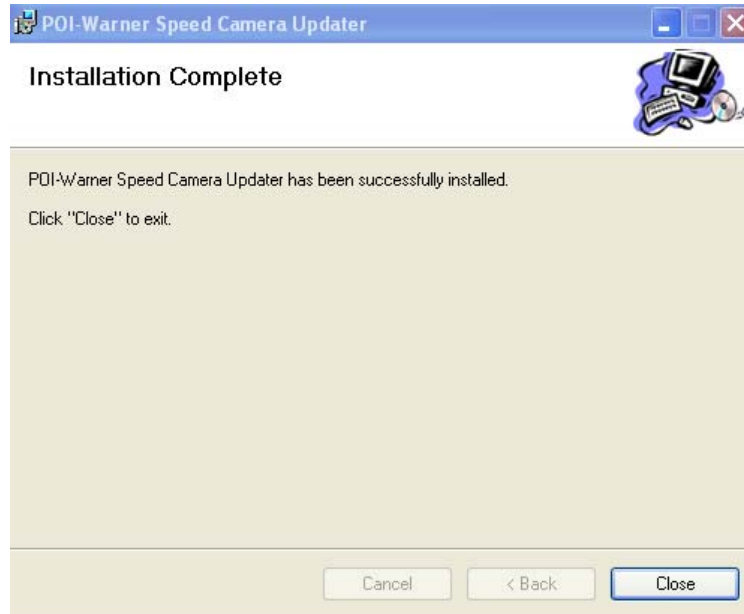
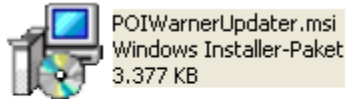
As long as this card is inserted in your device, you are using the new navigation software and map you purchased. To use the original one that came with your device, simply remove this card and use the original map the way you did.

### NOTE:

- Do not remove the ESD560 SD card when using the new navigation software.
- All user settings of your previous navigation engine e.G. address-book etc can not be transferred to the new software.
- POI Warner software will not run on your new application but an application to show safety cameras is already implemented seamlessly in your newest software on SD card.

### How to transfer safety camera data into your updated device:

1. Install the "POI Warner Updater Speed Camera Updater" on your PC (Freeware)



2. After successful installation, start the software on your PC
  - a. Select your language
  - b. Make sure, that your MAP360/MAP560 with ESD560 inserted is connected via Active sync to your PC.

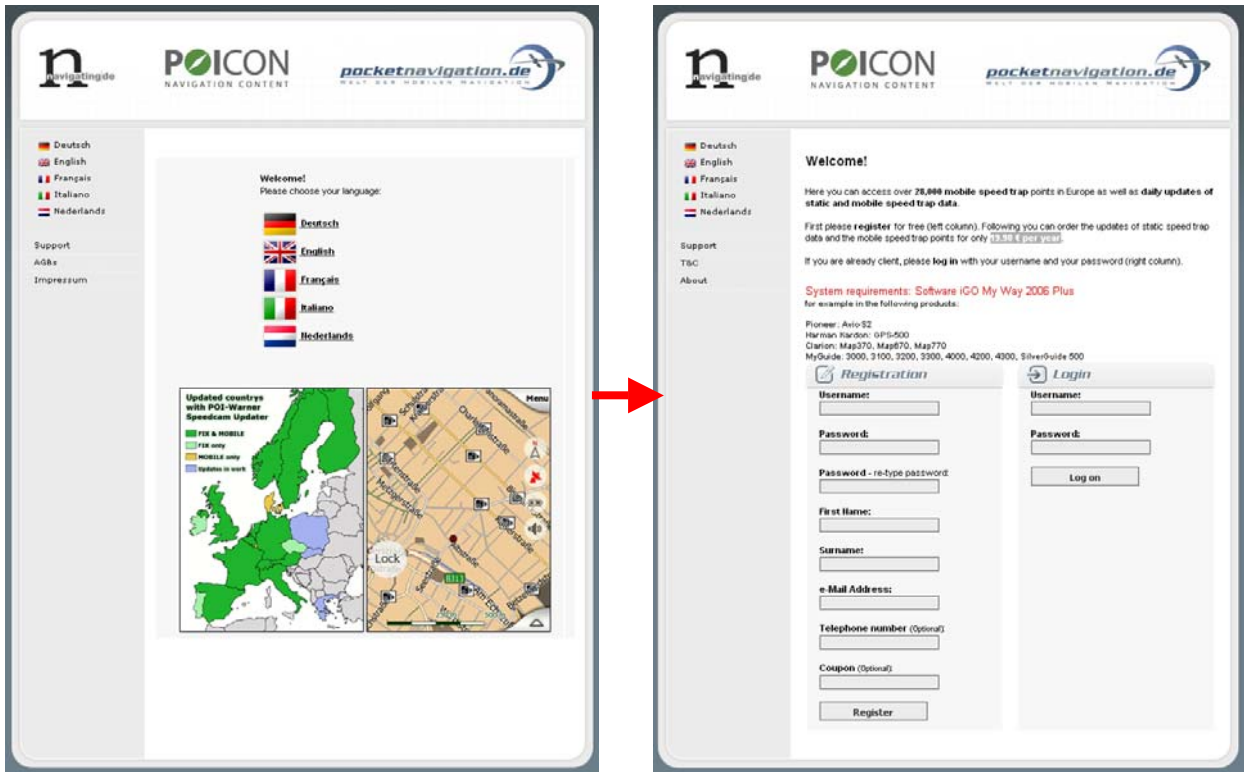


3. Please select an option
  - a. Installation of “Fixed speed cameras” is free of charge for the first time. For the second update, the user has to subscribe on following website: [www.speedcamupdate.com](http://www.speedcamupdate.com)
  - b. For “Mobile speed camera” updates, a subscription is required on same website.

NOTE: The annual fee for “Mobile safety camera update” and also the second update of “Fixed safety camera” data will be 19,95 €



How to  
subscribe



Please restart your Navigation software to apply the changes.



***If you need more in-depth information about the navigation software, read the user manual supplied on the disc.***