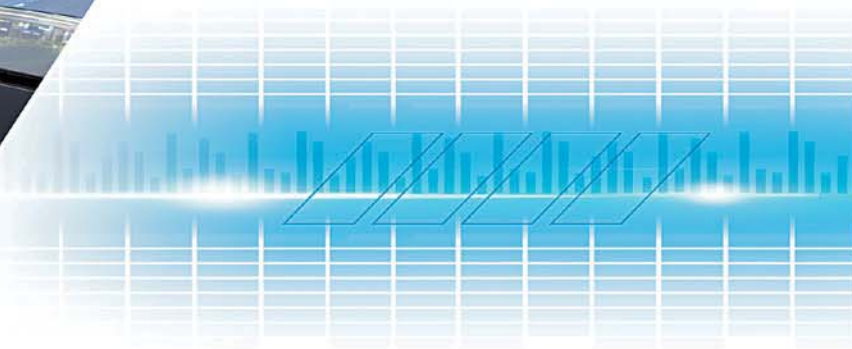


clarion®

2016

Catalog for Car Audio, Multimedia and Navigation



Innovation Is at The Heart of Everything We Do

For over 75 years, one thing has remained consistent when it comes to Clarion, and that's our drive for innovation. Since developing Japan's very first car radio in 1951, we have introduced countless breakthrough technologies and innovative products that have helped shape the industry's direction and consumers' expectations.

For decades upon decades, many of Clarion's benchmark technologies have been adopted by top auto manufacturers across the globe. Today, Clarion is one of the leading sources for delivering cloud-based in-vehicle infotainment and safety solutions including products that feature connectivity platforms, apps, special content and real-time information monitoring and analysis. Clarion has also retained its global position as the gold standard when it comes to traditional audio, multimedia and navigation technologies and products while enhancing the overall user experience by incorporating full smartphone integration throughout the product lineup.

We expect the next 75+ years to be as exciting and innovative. No matter how fast technology evolves, we will be there to deliver cutting edge in-vehicle solutions and products with our legendary attention to performance, convenience, reliability, durability, safety and security. Rely on Clarion for all your automotive infotainment and connectivity needs and rest assured that catering to the needs of your mobile lifestyle is one of our top priorities both today and tomorrow.

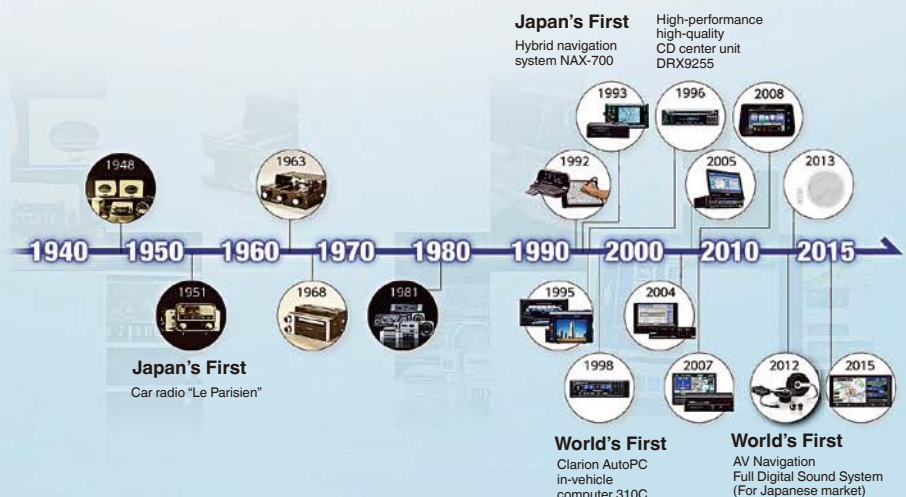


Introducing the 2016 Product Lineup

Clarion's 2016 product lineup is designed to bring you the finest technology in the industry. From our flagship multimedia system featuring high resolution audio to our powerful amps, speakers and vision assist cameras, Clarion delivers extraordinary performance, reliability, connectivity and superior user interface. Join us on the journey of in-vehicle connectivity to bring you new must-have capabilities!

At the Leading Edge: From Japan to the World

Clarion has been creating world-class in-vehicle technology since 1940. Our track record includes several revolutionary "firsts" for Japan and the World. These products set the evolution of car entertainment into high gear. Based on our past and present, the future is bright!





NAVIGATION / MULTIMEDIA

Master the Road and Maximize Your Drive Time Enjoyment

Clarion's extensive in-vehicle expertise spans decades giving us a keen eye for what consumers want and need. That's why our multimedia lineup includes flexible car navigation solutions complemented with a wide array of audio visual capabilities, so that the road ahead is efficient AND entertaining. To coincide with your mobile lifestyle, we are constantly innovating to make certain that the interaction between your mobile device and in-car multimedia station is seamless. We invite you to experience a higher level of digitally driven satisfaction, with Clarion.



AUDIO

Superior Audio Connectivity and Flexibility

Clarion's in-vehicle audio units feature a sharp and sophisticated design that blends perfectly with a wide range of automotive interiors. Compatibility with the latest digital media and technology such as PANDORA® internet radio, and iPod® and Bluetooth® connectivity lets you bring your world into your car.



AMPLIFIERS SUBWOOFERS SPEAKERS

The Power to Really Drive Your Music

As part of an all-Clarion system, or an upgrade to any existing system, our amps, subwoofers and speakers blow away the competition. Reproducing superior sound at high output levels is a science, and Clarion's team of highly-skilled audio engineers has met the challenge and exceeded expectations. Offering a full lineup of aesthetically pleasing sound delivery devices, maintaining sound purity and clarity while looking good has never been so easy.



Expand Your World, Right from Your Car

New

NX706

2-DIN DVD MULTIMEDIA STATION WITH BUILT-IN NAVIGATION & 7-INCH TOUCH PANEL CONTROL

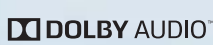


Power Output:
20W x 4 RMS (4Ω @ 14.4V±1% THD+N)
Signal to Noise Ratio:
81dB (Ref: 1W into 4Ω)

- iPhone® Audio and Video Playback
- Built-in Bluetooth® for Hands-free Calling
& Audio Streaming
- 2-Zone Entertainment

15-Band Graphic Equalizer

Equipped with a full-featured 15-band graphic equalizer, you will enjoy superior control over the audio spectrum with frequency adjustments in the 25 Hz to 16 kHz range over fifteen bands. This gives you the power to get the most out of your sound system, and the ability to contour the sound output to your musical taste. Since the gain level can be adjusted for each source separately, you won't need to adjust the volume every time you switch to a low-volume source such as the radio.



Variable Color
Illumination for Keys
and LCD

User Interface Offers Superior Visibility and Intuitive Operation



The large, highly visible icons on the touch panel make the NX706 extremely user friendly. Flick operation support enables you to scroll through map screens, music selection screens and more.

GPS Navigation with Rich Graphics & Superior Functionality



The onboard navigation system features map coverage of all 50 states plus Puerto Rico and Canada. It includes 8GB map storage, 11 million points of interest and supports English, Spanish and French. 3D mapping includes elevation, 3D buildings and landmarks for select cities.

Siri® Eyes Free for No-Fuss Operation of iPhone



To connect to Siri Eyes Free, simply pair your iPhone® to the NX706 via Bluetooth. Once the pairing is established, long press the VOICE key on the unit to launch Siri and enjoy a smooth and safe drive with one-touch operation. * Please visit our website for a list of compatible iPhones.

Optical Digital Output for Sound System Upgradability



Thanks to the optical digital output, it is possible to use an optical cable to connect to external units such as Full Digital Sound units or DSP devices to upgrade your system to digital. Connecting the center unit to Full Digital Sound units enables you to enjoy cutting-edge high-quality digital sound. And since the output can be set to Fixed or Variable, you can maximize the volume of the source unit and adjust it at the processor, or finely adjust volume directly at the source unit.

The Intelligent Way to Stay Connected While You Drive

NX605

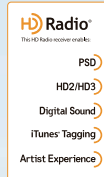
2-DIN DVD MULTIMEDIA STATION WITH BUILT-IN NAVIGATION/SMART ACCESS & 6.2-INCH TOUCH PANEL CONTROL



Power Output:
18W x 4 RMS (4Ω@14.4V±1% THD+N)
Signal to Noise Ratio:
76dB (Ref: 1W into 4Ω)

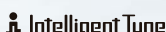


(Optional RCB198)



Intelligent VOICE™

Smart Access



Simple, Flexible and Powerful



The Smart Access cloud service platform enables your car to connect to a vast array of content and information by way of cloud computing, using a smartphone. Since information is constantly updated, you can always have access to the latest and most relevant information available. Content ranging from GPS navigation to SNS (Social Network Services) is accessible via your smartphone, using apps optimized for in-car use.

Use Your Voice to Operate a Variety of Functions

Clarion Intelligent VOICE™ uses voice recognition technology to enable information search and destination setting. Connect using your Google account and access your mail and calendar just by talking. You can even use destination information inside emails and calendar entries for navigation guidance.

What can I do for you?



Intelligent VOICE™



POI Search

Unlike typical voice recognition, you can now search for destinations just by saying what you want.



Send to Mail

Driver can easily send to mail by voice.

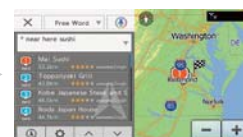


Telephone

You can make a call by using the address book of your connected smartphone.

Searching Couldn't Be Simpler

Just say something like "I'm hungry" and Clarion Intelligent VOICE™ will answer back. Throw it a question like "Any good sushi bars in town?" and you'll get the answers and suggestions you're looking for, spoken out loud so you can keep your eyes on the road. Clarion Intelligent VOICE™ utilizes Google™ voice recognition technology and information to make searching a breeze.



Always Stay on Top of Things

Just say SMS (Short Message Service) and simple voice prompts will ask you the rest — tell it the name of the recipient and the message to send, and off it goes hands-free. Google™ Account functionality enables you to sync with mail and calendar. Have your incoming emails read aloud to you, compose and send emails, and check your schedule quickly and easily.

* SMS function is valid on Android smartphones only.

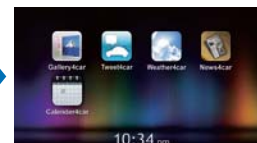
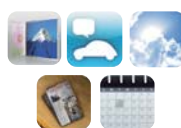
Link to Mail



Link to Calendar

A Growing Array of Road-Ready Apps (Smart Access Smartphone Link)

Smart Access allows you to easily enjoy the apps you like on your NX605 through Smartphone integration. Link your car with your life for weather, news, internet radio and SNS (Social Network Services).



NX405

2-DIN DVD MULTIMEDIA STATION WITH BUILT-IN NAVIGATION & 6-INCH TOUCH PANEL CONTROL



Power Output:
19W RMS x 4 Channels at 4Ω and ≤1% THD+N
Signal to Noise Ratio:
83 dB(A)(reference 1 W into 4Ω)

- GPS Navigation with Rich Graphics and Superior Functionality
- Built-in Bluetooth® for Hands-free Calling & Audio Streaming
- 2-Zone Entertainment



Bluetooth®



GPS Navigation with Rich Graphics and Superior Functionality

NX405 features a built-in car navigation system with simple destination input, turn-by-turn voice prompts, and selectable route guidance - everything you need to reach your destination quickly and efficiently. Pre-loaded with 11 million points of interest, its database includes national parks, restaurants, gas stations and much more.



microSD Card Slot for Navigation

VX405

2-DIN DVD MULTIMEDIA STATION WITH 6-INCH TOUCH PANEL CONTROL



Power Output:
19W RMS x 4 Channels at 4Ω and ≤1% THD+N
Signal to Noise Ratio:
83 dB(A)(reference 1 W into 4Ω)

- Built-in Bluetooth for Hands-free Calling & Audio Streaming
- 2-Zone Entertainment



Bluetooth®



Extensive Media Support for High-Quality Video and Audio Enjoyment

In addition to CDs and DVDs, the VX405 also supports playback of music and video files stored on a smartphone, microSD card or USB memory device. The VX405 uses high-speed CPU to enable high-quality H.264 video as well as FLAC (Free Lossless Audio Codec) audio files to be enjoyed in your car.



NZ503

DVD MULTIMEDIA STATION WITH BUILT-IN NAVIGATION & 7-INCH MOTORIZED HIGH RESOLUTION TOUCH PANEL CONTROL



Power Output:
19W x 4 RMS (40@14.4V±1% THD+N)
Signal to Noise Ratio:
93dB (Ref: 1W into 4Ω)



Bluetooth®



An All-in-one Multimedia System in a 1-DIN Unit.

MULTIMEDIA SERIES COMPARISON

	NX706	NX605	NX405	VX405	NZ503
Media	Smart Access	—	●*1	—	—
	DVD/CD	●	●	●	●
	Made for iPod®/ iPhone®	●	●	●	●
	Android™ Phone Ready	●	●	●	—
	HDMI™ Mode	Ready	—	Ready	Ready
	Built-in Bluetooth®	●	●	●	●
	Sir® Eyes Free	●	—	●	—
	HD Radio™	—	Built-in	—	Ready (THD400)
Playback Media	SiriusXM®	Ready*2	Ready*2	Ready*2	Ready*2
	Pandora® internet radio	●*1	●*1	●*1	●*1
Bluetooth	MP3/WMA	—	●*3	—	●*4
	MP3/WMA/AAC	●*4	—	●*4	●*3
Navigation	Built-in Microphone	●	●	●	●
	Optional External Microphone	●	●	●	●
Sound Enhancement	Built-in Navigation	●	●	●	—
	POIs	11 million	11 million	11 million	—
Connectivity	Real Time Traffic by TTWN	—	●	—	—
	EQ	15-Band	Intelligent Tune	BEAT EQ*5	BEAT EQ*5
Rear Vision Camera Ready	LPF/HPF	●	●	●	●
	Rear Vision Camera Ready	●	●*6	●	●
2-Zone Entertainment	2-Zone Entertainment	●	●	●	●
	RCA Output	2V/6ch	4V/6ch	2V/6ch	2V/6ch
Wireless Remote	Wireless Remote	●	Optional	●	●
	OEM Steering Wheel Control Ready	●	●	●	●

* For details please visit the Clarion website. *1 Please visit our website for details on compatible smartphones. *2 SiriusXM Connect Vehicle Tuner *3 CD/microSD/USB *4 CD/USB *5 3-Band PEQ *6 Accessory cable is required.

Watch Your Back!

New

CC520

CMOS VISION ASSIST CAMERA



Wide-angle
Mirror image
Image Selectable
Normal image
Wide-angle

- 1/4" Color CMOS Sensor Technology
- High Visibility Day and Night
- Low Light Sensitivity: 0.1 lux
- 126 Degree Horizontal Viewing Angle
- 100 Degree Vertical Viewing Angle
- IP67 Water Ingress Protection
- ASTM D4329 (UV) Certified
- Auto Gain Control (AGC)
- Auto White Balance
- Mirror / Normal Image Selectable
- Active Pixels: 322,752 (656 horizontal x 492 vertical)
- Tilt Adjustable Mounting Bracket Included
- Hydrophobic coated lens repels water to improve visibility
- Video Output: NTSC
- 23-feet (7m) RCA and Power Connections
- Dimensions (inches): 29/32 (H) x 29/32 (W) x 7/8 (D)
- Compatible with CAU002 Concealed License Plate Bracket and CAU001 Illuminated License Plate Frame
- Defeatable Distance Guide Lines (Red, Orange, Yellow, Green)



New

CC720

CMOS VISION ASSIST CAMERA



Wide-angle
Mirror image
Image Selectable
Normal image
Wide-angle

- 1/4" Color CMOS Sensor Technology
- High Visibility Day and Night
- Low Light Sensitivity: 0.1 lux
- 160 Degree Horizontal Viewing Angle
- 120 Degree Vertical Viewing Angle
- IP67 Water Ingress Protection
- ASTM D4329 (UV) Certified
- Auto Gain Control (AGC)
- Auto White Balance
- Mirror / Normal Image Selectable
- Active Pixels: 348,160 (680 horizontal x 512 vertical)
- Tilt Adjustable Mounting Bracket Included
- Hydrophobic coated lens repels water to improve visibility
- Video Output: NTSC
- Audio Input (Microphone)
- 23-feet (7m) RCA and Power Connections
- Dimensions (inches): 29/32 (H) x 29/32 (W) x 7/8 (D)
- Compatible with CAU002 Concealed License Plate Bracket and CAU001 Illuminated License Plate Frame
- Defeatable Distance Guide Lines (Red, Orange, Yellow, Green)



Defeatable Distance Guide Lines (Red, Orange, Yellow, Green) Make Parking a Cinch

By connecting the CC520 or CC720 to a Clarion navigation multimedia unit, you'll be able to view different colored guide lines to indicate the distance from your vehicle to a safe stopping point.

Extremely High Sensitivity, Courtesy of Clarion's Lens and Sensor

CC520 and CC720's 0.1 lux CMOS sensor contains over 322,000 active pixels. Images are consistently crystal clear and free of smear effects. Enjoy perfect visibility, even at night!



CAU001

ILLUMINATED LICENSE PLATE FRAME FOR REAR VISION CAMERA

* Camera not included



New

CAU002

CONCEALED LICENSE PLATE BRACKET FOR REAR VISION CAMERA

* Camera not included

ACCESSORIES

CROSSOVER/EQUALIZER

MCD360

3-way Electronic Crossover

- 6/4/2 Channel RCA Input
- 6-Channel / 5-Volt RCA Outputs
- Adjustable Level Outputs for Front, Rear, and Subwoofer
- Subwoofer Bass Boost Control
- Remote Subwoofer Level Control Knob Included



EQS755

1/2-DIN Graphic EQ/Crossover

- 7-Band Graphic Equalizer
- 1/2-DIN Chassis
- 6-Channel / 8-Volt RCA Outputs
- Independent Master Volume and Subwoofer Level Control
- Dual 2-Channel RCA Input with Variable Gain Adjustment
- 3.5mm Front AUX Input
- RCA & Speaker Level Input



OPTIONAL ACCESSORIES

CCA750

iPod / iPhone Video Connecting Cable

for NX605/FX503/NX405/VX405/NZ503/CZ505/CZ305/CZ205/CX505/CX305/M704/VZ401/CMD8/M303/CMS5



CCAUSBAV

3.5mm/USB Audio/Video Extension Cable



CCA644

Camera Input Cable for NX605/FX503



RCB199

External Microphone Visor Mount

RCB204

External Microphone Multi-Mount



Wireless IR Remotes

RCB198

Remote Control for NX605

RCX001

Remote Control for CZ505/CZ305/CZ205/CX505/CX305/M704/M505/M205/CMD8/M303

RCX005

Remote Control for NX706/NX405/VX405

Car Audio Redefined

CZ505

HD Radio™/Bluetooth®/CD/USB/
MP3/WMA RECEIVER

Power Output:
22W x 4 RMS (4Ω@14.4V±1% THD+N)
Signal to Noise Ratio:
93dB (Ref: 1W into 4Ω)

- Built-in HD Radio™
- SiriusXM-Ready™
- Pandora® Internet Radio Capability
- 6-Channel / 4 Volt RCA Output
- 50W x 4 High Power Amplifier



Made for
iPod iPhone



This HD Radio receiver enables:

PSD

HD2/HD3

Digital Sound

iTunes® Tagging



728-Variable
Color
Illumination for
Keys and LCD

A Sleek Design with the Essence of High Quality



The CZ505 features a sleek design and sophisticated styling that elevates you to the next level of car audio. This unit uses high quality materials to create a sharp high-tech appearance while maintaining ease of use.

Built-in HD Radio for Digital Quality Radio



Enjoy HD Radio with digital multicasting so you can listen to your favorite FM and AM stations with high quality digital sound, and access a wider variety of programming. Get advanced functions like iTunes® tagging, and with the receiver built-in, you're good to go from day one!

Bluetooth aptX® for Superior Sound Entertainment via Compatible Bluetooth Audio Devices



CZ505 incorporates the Bluetooth aptX codec that is also incorporated in many Android™ Phones*. Since it retains the sound elements that are lost during digital compression of audio files, you can enjoy near CD quality sound. Now it's possible to listen to high quality audio with wireless convenience.

* Please see our website for details of compatible Bluetooth mobile phones.
<http://www.clarion.com/us/en/user-support/connection/cellphone/index.html>



CZ305

Bluetooth/CD/USB/MP3/
WMA RECEIVER

Power Output:
21W x 4 RMS (4Ω@14.4V±1% THD+N)
Signal to Noise Ratio:
93dB (Ref: 1W into 4Ω)



Made for
iPod iPhone

WORKS WITH
PANDORA

CZ205

CD/USB/MP3/WMA RECEIVER



Power Output:
21W x 4 RMS (4Ω@14.4V±1% THD+N)
Signal to Noise Ratio:
93dB (Ref: 1W into 4Ω)

Made for

iPod iPhone

WORKS WITH
PANDORA

Seamlessly Enjoy the Music You Love

CX505

**2-DIN HD Radio/Bluetooth/
CD/USB/MP3/WMA RECEIVER**

Power Output:
22W x 4 RMS (4Ω@14.4V±1% THD+N)
Signal to Noise Ratio:
93dB (Ref: 1W into 4Ω)

- Built-in HD Radio
- SiriusXM-Ready
- Pandora Internet Radio Capability
- 6-Channel / 4 Volt RCA Output
- 50W x 4 High Power Amplifier



Made for
iPod iPhone



This HD Radio receiver enables:

PSD

HD2/HD3

Digital Sound

iTunes Tagging



**728-Variable
Color
Illumination for
Keys and LCD**

**Bold Symmetrical Design
Balances Style and Usability**



The large volume knob positioned in the center, clustered control buttons, large display area and cool blue illumination all contribute to this model's signature look and superior usability.

**Enjoy Interactive Pandora Internet
Radio Anytime on the Road**



Have fun with the same Pandora internet radio stations you enjoy at home on your PC. Give songs a "thumbs up" or "thumbs down" — this interactivity means you'll be listening to more of the songs you want. Just connect your iPhone* and open up a whole new world of radio.

* CX505 plays iPhone content via Bluetooth or USB.

**SiriusXM Satellite Radio with
Optional Tuner (SXV200 or SXV300)**



Connecting an optional SiriusXM Vehicle Tuner gives you access to hundreds of channels, including commercial-free music, sports, news, talk and entertainment. Artist, Song, Game Alerts and Replay functions, make it easy to keep up with your favorites! iTunes Tagging is also supported.

CX305

**2-DIN Bluetooth/CD/USB/
MP3/WMA RECEIVER**

Power Output:
22W x 4 RMS (4Ω@14.4V±1% THD+N)
Signal to Noise Ratio:
93dB (Ref: 1W into 4Ω)



Made for
iPod iPhone



**Compact, Dustproof,
Weatherproof and Vibration Resistant**

RG9451

WEATHERPROOF 12/24V AUDIO UNIT

Just because you have to work outdoors doesn't mean you should have to give up the comfort of a quality audio unit. That's why, at Clarion, our commitment to making superior in-vehicle products doesn't stop at regular cars. To meet the rigorous demands of work on a construction site or in an agricultural setting, we created the RG-9451 weatherproof audio unit. With a rugged, watertight design that keeps out dust and water and dampens vibrations, the RG-9451 lets you listen to your favorite broadcasts without worrying about the weather or the environment.



Release the Power from Within



Energize Your Music with Exceptional Performance

CLASS D AMPLIFIERS



New

XC2510



New

XC2410



New

XC2110



XC1410

AMPLIFIERS FEATURE COMPARISON

	Maximum Power Output	4-Ohm	2-Ohm	4-Ohm Bridged	Number of Channels	Dimensions (W" x L" x H")	CEA 2006 Power Ratings
XC2510	700W	50W x 4 200W x 1	75W x 4 300W x 1	150W x 2	5	11-1/32 x 4-21/64 x 1-17/32	75W x 4 RMS [2Ω @ ≤ 14.4V 1% THD+N] 50W x 4 RMS [4Ω @ ≤ 14.4V 1% THD+N] S/N 70dB (REF: 1W INTO 4Ω)
XC2410	400W	50W x 4	75W x 4	150W x 2	4	7-1/4 x 3-15/64 x 1-17/32	75W x 2 RMS [2Ω @ ≤ 14.4V 1% THD+N] 50W x 2 RMS [4Ω @ ≤ 14.4V 1% THD+N] S/N 70dB (REF: 1W INTO 4Ω)
XC2110	400W	200W x 1	300W x 1	—	1	7-61/64 x 3-15/64 x 1-17/32	300W x 1 RMS [2Ω @ ≤ 14.4V 1% THD+N] 200W x 1 RMS [4Ω @ ≤ 14.4V 1% THD+N] S/N 70dB (Ref: 1W into 4Ω)
XC1410	300W	50W x 4	75W x 4	—	4	7-1/8 x 2-3/4 x 1-3/8	75W x 4 RMS [2Ω @ ≤ 14.4V 1% THD+N] 50W x 4 RMS [4Ω @ ≤ 14.4V 1% THD+N] S/N 80dB (Ref: 1W into 4Ω)

Add Rich, Pumping Bass



3" Shallow Mount Design for Flexible Installation



WF3030D / WF2520D
WF2520



Developed Specifically to Deliver Big Bass Sound



WG3020D / WG3020
WG2520D / WG2520

SUBWOOFERS FEATURE COMPARISON

	Size	Maximum Power Handling	High Strength Stamped Steel	Dual Voice Coil	CEA-2031 Speaker Rating
WF3030D	12"	1000W	●	●	RMS Power : 300 Watts / Impedance : 4 Ohms + 4 Ohms
WF2520D	10"	1000W	●	●	RMS Power : 300 Watts / Impedance : 4 Ohms + 4 Ohms
WF2520	10"	1000W	●	—	RMS Power : 300 Watts / Impedance : 4 Ohms
WG3020D	12"	1000W	●	●	RMS Power : 300 Watts / Impedance : 4 Ohms + 4 Ohms
WG3020	12"	1000W	●	—	RMS Power : 300 Watts / Impedance : 4 Ohms
WG2520D	10"	1000W	●	●	RMS Power : 300 Watts / Impedance : 4 Ohms + 4 Ohms
WG2520	10"	1000W	●	—	RMS Power : 300 Watts / Impedance : 4 Ohms

* For details please visit www.clarion.com/us

High Quality Speakers Designed for Maximum Performance



Full Range of Speakers
to Easily Upgrade
Your Car's Sound Quality

SRG1623S

● 2-Way Component System



SRG6953R

● Multiaxial 5, 3-way



SRG6833C



SRG6933R

● Multiaxial 3-way



SRG4633C



SRG1623R

● Coaxial 2-way



SRG1323R



SRG1023R



SRG213H

● Balanced-Drive Tweeter

Compact Bass Solution

SRV250

150W MAX. AMPLIFIED SUBWOOFER
LOW-PROFILE DESIGN

Power Output:
29 W x 2 RMS (2Ω@14.4V±1% THD+N)
Signal to Noise Ratio:
S/N≥65dB (Ref; 1W into 2Ω)



- 6-3/4" Subwoofer
- Built-in MOS-FET Power Amp with 150W Max. Output
- Low-Profile Design Allows Installation under Seat
- AMI-PP Cone with Aramid Fiber Mixed in Polypropylene
- Rigid Aluminum Die-cast Enclosure for Tight Bass Reproduction
- Independent Buttons for Gain Control / Low Pass Filter / Phase Shift on Wired Remote Control (cable: 6.5ft)
- RCA / Speaker Level Inputs
- Remote Control Extension Cable (13ft) Included



SPEAKERS FEATURE COMPARISON

	Size	Maximum Power Handling	Type	CEA-2031 Speaker Rating
SRG1623S	6-1/2"	350W	2-Way Component System	RMS Power : 40 Watts Impedance : 4 Ohms
SRG1623R	6-1/2"	260W	Coaxial 2-Way	RMS Power : 40 Watts Impedance : 4 Ohms
SRG1323R	5-1/4"	230W	Coaxial 2-Way	RMS Power : 35 Watts Impedance : 4 Ohms
SRG1023R	4"	200W	Coaxial 2-Way	RMS Power : 30 Watts Impedance : 4 Ohms
SRG6953R	6" x 9"	600W	Multiaxial 5-Way	RMS Power : 100 Watts Impedance : 4 Ohms
SRG6933R	6" x 9"	400W	Multiaxial 3-Way	RMS Power : 50 Watts Impedance : 4 Ohms
SRG6833C	6" x 8"	300W	Multiaxial 3-Way	RMS Power : 50 Watts Impedance : 4 Ohms
SRG4633C	4" x 6"	200W	Multiaxial 3-Way	RMS Power : 30 Watts Impedance : 4 Ohms
SRG213H	1"	200W	Tweeter	RMS Power : 40 Watts Impedance : 4 Ohms

Exhilarate Your Driving Experience



clarion®

www.clarion.com

Notes

• "Made for iPod" and "Made for iPhone" mean that an electronic accessory has been designed to connect specifically to iPod or iPhone, respectively, and has been certified by the developer to meet Apple performance standards. Apple is not responsible for the operation of this device or its compliance with safety and regulatory standards. Please note that the use of this accessory with iPod or iPhone may affect wireless performance. iPhone, iPod, Siri and iTunes are trademarks of Apple Inc., registered in the U.S. and other countries. Lightning is a trademark of Apple Inc. • Manufactured under license from Dolby Laboratories. Dolby, Dolby Audio, and the double-D symbol are trademarks of Dolby Laboratories. • Pandora, the Pandora logo, and the Pandora trade dress are trademarks or registered trademarks of Pandora Media, Inc. used with permission. Pandora is only available in certain countries. Please visit <http://www.pandora.com/legal> for more information. • Microsoft Windows and Windows CE Logo are either registered trademarks of Microsoft Corporation in the United States and/or other countries. • Android™ is a trademark of Google Inc. • © 2013 Google Inc. All rights reserved. Google and the Google Logo are registered trademarks of Google Inc. • © 2013 CSR plc and its group companies. The aptX® mark and the aptX logo are trademarks of CSR plc or one of its group companies and may be registered in one or more jurisdictions. • The trademark and the Bluetooth® logo are owned by the Bluetooth SIG, Inc. and any utilization of these trademarks by Clarion is carried out under license. • DivX®, DivX Certified® and associated logos are trademarks of DivX, LLC and are used under license. DivX Certified® to play DivX® video, including premium content. Covered by one or more of the following U.S. patents: 7,295,673; 7,460,668; 7,515,710; 7,519,274 • Total Traffic & Weather Network is a division of iHeartMedia, Inc. and holds the rights to the traffic incident data and RDS-TMC network through which it is delivered and are used under license. • SiriusXM and all related marks and logos are trademarks of SiriusXM Radio, Inc. All rights reserved. • HD Radio™ Technology manufactured under license from iBiquity Digital Corporation. U.S. and Foreign Patents. HD Radio™ and the HD, HD Radio, and "Arc" logos are proprietary trademarks of iBiquity Digital Corp. HD Radio™, HD Radio Ready™, and the HD Radio Ready logo are proprietary trademarks of iBiquity Digital Corporation. • Smart Access logos and trademarks are the property of Clarion Co., Ltd. • Waze logos and registered trademarks are the property of Waze Inc. • MotionX logos and registered trademarks are the property of Fullpower Technologies, Inc. • The terms HDMI and HDMI High-Definition Multimedia Interface, and the HDMI Logo are trademarks or registered trademarks of HDMI Licensing LLC in the United States and other countries. • All other trademarks and commercial names are the property of their respective owners. • microSDHC Logo is a trademark of SD-3C, LLC.

• Specifications and designs are subject to change without notice. • Photos are non-binding. The manufacturer and importer do not take responsibility for any printing errors. • All units in this catalog are primarily intended for installation in passenger vehicles. Use in commercial trucks, tractors, off-road vehicles, construction machinery, boats (except Marine models), and other special-purpose vehicles or on motorcycles is not recommended. • It may not be possible to resume iPod Video playback. Whenever ACC is turned OFF/ON, playback will commence from the beginning of the file. • There is no guarantee that all units in this catalog play CCCD (Copy Control CD), Hybrid SACD (Super Audio CD), CD-R/RW and DVD±R/RW. • Please see the Clarion website for iPod models that can be connected. • Clarion's navigation systems should not be used as a substitute for your own judgement. Any route suggestions made by a Clarion navigation system should never override any local traffic regulations, your own judgement, and/or knowledge of safe driving practices. Disregard route suggestions by the navigation system if such suggestions would: cause you to perform a hazardous or illegal maneuver, place you in a hazardous situation, or route you into an area you consider unsafe. • The advice provided by the navigation system is to be regarded only as a suggestion(s). There may be situations where the navigation system displays the vehicle's location incorrectly, fails to suggest the shortest course, and/or fails to direct you to your desired destination. In such situations, rely on your own driving judgement, taking into account current driving conditions. • Do not use the navigation system to route you to emergency services. The database does not contain a complete listing of locations of emergency service providers such as police, fire stations, hospitals and clinics. Please use your judgement and your ability to ask for directions in these situations. • Smartphone compatibility may vary by model and operating system. Please check www.clarion.com for details. • As a driver you are solely responsible for your road safety. • In order to avoid a traffic accident or traffic offense, remember that actual road conditions and traffic regulations take precedence over the information contained in the navigation system. • Accordingly, the software may contain inaccurate or incomplete information due to the passage of time, changing circumstances, and due to the nature of the sources used. Please observe the actual traffic circumstances and regulations at all times while driving. • The navigation system does not provide, or account for in any way; information regarding traffic and road laws; vehicle specifications including weight, height, width, load, and/or speed restrictions; road conditions including road slope, grade, and/or surface conditions; obstruction information including bridge and tunnel height and width, and/or other prevailing driving and/or road conditions. Always rely on your own driving taking into account current driving conditions. • Minimize the amount of time spent viewing the screen while driving. • The driver should not operate this unit while driving. Be sure to stop the vehicle in a safe place when the driver is operating this unit. For safety, some of the navigation functions are prohibited unless the vehicle is stopped with the parking brake engaged. • 3rd party devices such as, but not limited to, Apple iPod, Bluetooth mobile phones, SiriusXM Vehicle Tuner are not included with Clarion products.

Clarion Corporation of America is a member of the Consumer Electronics Association (CEA) and Specialty Equipment Manufacturers Association (SEMA)

WARNING: Driver is prohibited by law from viewing a video signal on any in-dash monitor while the vehicle is in motion.

Scan this QR code
for Clarion's 2016
product line-up



Clarion Corporation of America
6200 Gateway Drive
Cypress, CA 90630, U.S.A.
Tel 310.327.9100 Fax 310.327.1999

Clarion Canada Inc.
3800A Laird Road, Unit 6, Mississauga,
Ontario, L5L 0B2, Canada
Tel 905.828.2900 Fax 905.828.1218

Electronica Clarion, S.A. de C.V.
Headquarter
Piedra # 200, Col. Jardines del Pedregal, C.P. 01900, MEXICO D.F.
Tel +52 (55) 5481-2405 Fax +52 (55) 5135-2760
Email: mbodek@clarionmx.com

Printed in U.S.A. 2016CATL