



**24-bit Dual D/A Converter for Low Distortion**

The system equips independent sine magnitude type 24-bit DACs converters for the left and right channels. This helps improve linearity in the minute signal range, allowing the high S/N ratio and broad dynamic range of CDs to be enjoyed to their fullest, with a rich and expressive playback sound.



**High-capacity ±15V DC/DC Converter**

By way of ±15V, which is common in high-end home audio systems, this high-capacity DC/DC converter delivers ample circuit running capacity. Maximum output of up to 9V non-clip is made possible. And also by separating the DC/DC converter, which is a



source of noise, from the main unit, it minimises its effect on the sound as much as possible.

**Dither processing to smooth out digital sound (HX-D1)**

By applying random noise components known as "dither" to the digital data prior to D/A conversion, the tell-tale distortion particular to digital sources is dramatically reduced. This process creates sound waves that are 0th waveforms that exist in nature. The amount of dither is selectable with 3 levels to choose from.

**Digital circuitry to deliver high-level sound**

**High-gauge High purity OFC RCA Cable**



**HX-D1**

AM/FM CD PLAYER



- Clarion High Fidelity CD Player Without Built in Amplifier
- CeNET Control of 6 Disc CD Changer
- Dual 24-bit DACs Converter
- CD Text
- HDCD Disc Playback
- High-capacity DC/DC Converter (± 15 V)
- 4 Volt / 4 Channel RCA Output (Max 9 V)
- High Purity OFC Cable

**HDCD for 20-bit High Definition Sound**

HDCD (High Definition Compatible Digital) is a technology that allows high-resolution 20-bit sound to be recorded in 16-bit CD format. HX-D1 is equipped with a high-performance decoding IC that is compatible with HDCD. Play back an HDCD disc and you'll notice how subtle



**DRX9255EXL**

AM/FM CD PLAYER



**ALPHA Processor\***

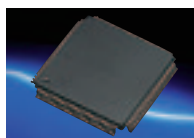
The ALPHA processor supplements the 16-bit data from the CD for playback of 20-bit quality sound. This system reproduces the analogue data existing on the original master tape to

- 2 Channel AUX Input
- High Visibility Blue-White VF Display
- Copper Plated Chassis
- Optical Input Terminal for connected with DCZ625
- Aluminium Analogue Rotary Volume
- 18 FM/6 AM Presets
- FM Diversity



Copper plated chassis to guard against sound degradation

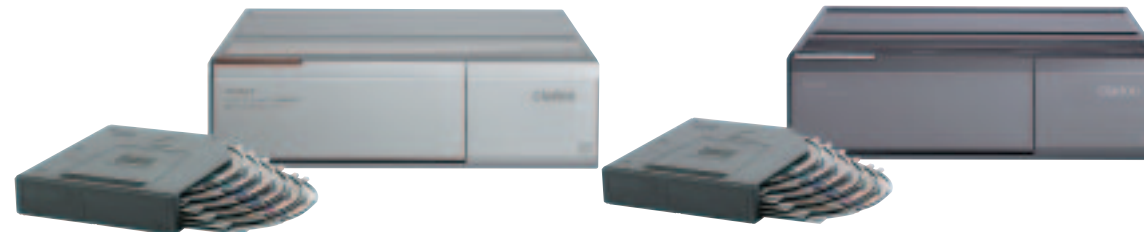
nuances are accurately expressed such as the breath of a vocalist. And since the HDCD decoding IC removes unnecessary elements of the high frequencies during D/A conversion, it also contributes to higher quality sound even when playing ordinary 16-bit encoded CDs.



- Clarion Performance CD Player Without Built in Amplifier
- C-BUS CD Changer Control
- ALPHA Processor\*
- Dual 20-bit DACs Converter
- 4 Volt/4 Channel RCA Output (Max 9 V)
- High Visibility Blue VF Display
- Copper Plated Chassis
- High S/N Analogue Rotary Volume
- 18FM/6 AM Presets
- FM Diversity

\*The ALPHA processor was developed by Nippon Columbia Co, Ltd.

reduce the digital quantisation distortion and to express the subtle nuances and resonances of the music that were lost in the digitalisation process.



**DCZ625**

CeNET 6-DISC CD CHANGER



- 8-Times Oversampling Digital Filter
- 1-bit DACs Converter
- CD Text
- CD-R/CD-RW Ready
- Optical Output Terminal

**DC625**

C-BUS 6-DISC CD CHANGER



- 8-Times Oversampling Digital Filter
- 1-bit DACs Converter
- CD-R/CD-RW Ready
- C-BUS



**FMC250**

CD CHANGER CONTROLLER WITH FM MODULATOR

- Disc Select (Up/Down)
- Random Play (Disc/Track)
- Track Music Search
- Last Position Memory
- 7-Seg. Green Colour LCD
- Cable (DIN): 2m
- Input Level Control: 4-Point
- Frequency Select.: 87.7 to 89.9 MHz (0.2MHz-Step 12-Point)
- IR Remote Control Included

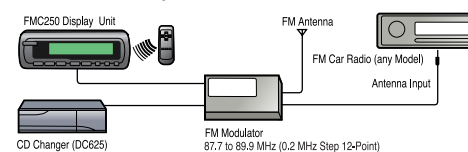


**Play Back CD Sound on Any FM Car Radio**

The FMC250 controls a Clarion CD changer and plays back the sound via your FM car radio — no matter which brand. The FMC250 hide away unit connects between your FM radio antenna input and the car antenna. Simply tune your radio anywhere from 87.7 to 89.9 MHz (0.2 MHz step 12-point) and listen to superior Hi-Fi CD sound in full stereo from the connected Clarion CD changer.

- The Black-Box unit connects one of Clarion's 6-disc CD changers (DC625)
- Connects to any electronically tuned FM stereo car radio

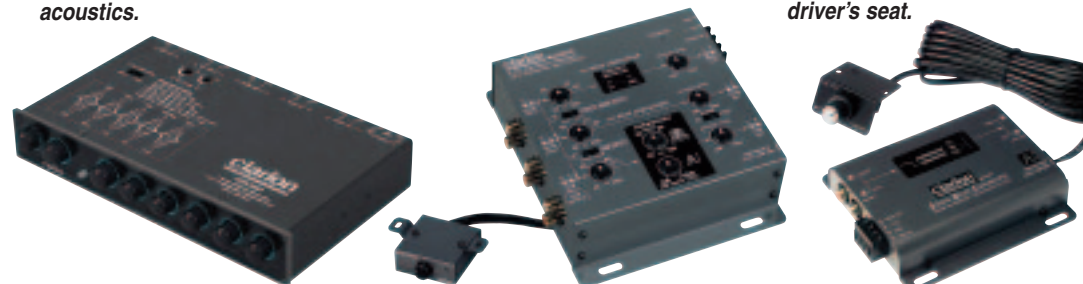
**FMC250 Car Audio System**



*Enables peak/dip level adjustment at 5 frequency points ranging from 45 Hz to 15 kHz to correct frequency characteristics to accommodate your car interior's acoustics.*

*Multi-channel network offers individual control over three frequency ranges to best match the performance characteristics of your speakers.*

*The easy way to upgrade to an active subwoofer system. Simple installation between power amplifier and subwoofer provides powerful bass sound control from the driver's seat.*



**EQS560**

1/2 DIN GRAPHIC EQUALISER/CROSSOVER

- 5 Band Graphic Equaliser
- Selectable Main & AUX Inputs
- Subwoofer Level Control
- Selectable Subwoofer Low Pass Frequency 60Hz or 90Hz
- 6 Channel/7 Volt RCA Output

**MCD360**

3-WAY ELECTRONIC CROSSOVER

- 18 dB/oct. Slope
- Front/Rear Subwoofer Level Control
- Built-in Bass EQ
- Subwoofer Remote Control included
- Cross Frequency Multiplier
- 2/4/6 Channel Inputs / Separate F/R Crossover
- 6 Channel Outputs

**BCX100**

SONIC BASS ENHANCER WITH REMOTE BASS CONTROL

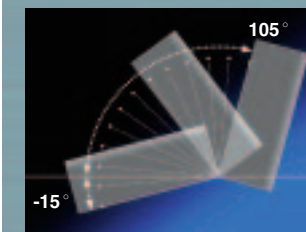
- Selectable Crossover Frequency 70, 90, or 120 Hz
- Remote In and Out
- Wired Remote Control included
- Subsonic Filter

**Compact for Installation Anywhere**



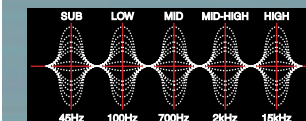
The DCZ625 and DC625 are so compact that they will fit almost anywhere in your car: in the boot, on the rear parcel shelf, or hanging under the dash. They say good things come in small parcels — the DCZ625 and DC625 are just such parcels.

**Compact Format and Flexible Mounting Angle**



Clarion gives you total freedom to choose where the CD changer should be installed. Clarion CD changers are compact and light, and can all be mounted horizontally, vertically or at an angle.

**5-Band Graphic Equaliser for Full System Sound Control**



EQS560 is a 5-Band Graphic Equaliser used to make frequency adjustments from 45Hz ~ 15kHz in five frequency bands. The EQS560 is used to make adjustments on frequency peaks and dips caused by interior size, seat shape/material, or by other vehicle factors. Moreover, you can tune the audio frequency point and level to boost or cut specific frequency points and create your own preferred sound. With the AUX input, you can equalise both audio source unit, and other sound applications such as a portable DVD or VCR. The 7V RCA output gives you a high signal-to-noise ratio to drive your audio system to full power.