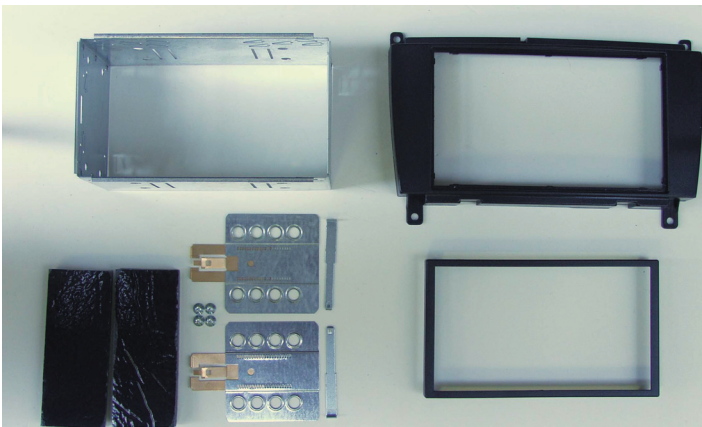


Clarion 2-DIN BKX-1190-17

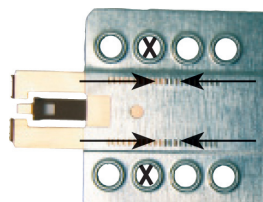
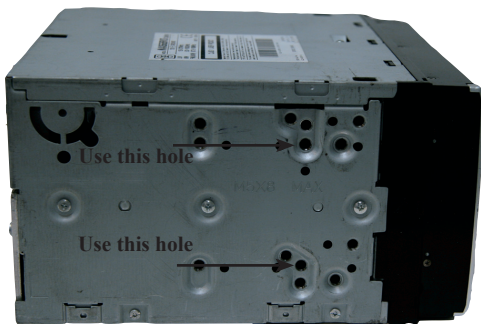
Installation manual for: Mercedes CLK (W209) 2006 -->



Installation kit includes the following items:

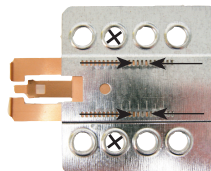
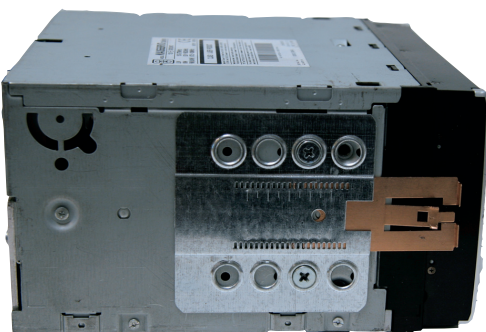
- * 1X 2-ISO 100 mm. metal bracket
- * 1X Replacement panel
- * 1X Radio trim
- * 2X Mounting plates
- * 2X Mounting spacers
- * 2X Radio removal keys
- * 4X Screws
- * 2X Cushion

EXAMPLE



We advice to use the following positions.
Other positions are also possible.

Use position 2 marked with a cross.
Use position 12 & 14 marked with an arrow.
Measured from left to right.



We advice to use the following positions.
Other positions are also possible.

Use position 2 marked with a cross.
Use position 14 & 16 marked with an arrow.
Measured from left to right.

* Mount the plates.

Remark: The fixing position can be different between Audio and Multimedia unit!

Clarion

2-DIN BKX-1190-17

1



Remove with a plastic wig the wooden panel.

2



Remove the ashtray. This is a click system.

3



Remove the wooden panel with a torx 20.

4



Remove the original radio with a trox 20.

5



Place the replacement panel.

Place the 2-DIN metal bracket.

6



Place the unit and connect all the wiring.

Connect all of the needed wiring harnesses and check all connections carefully