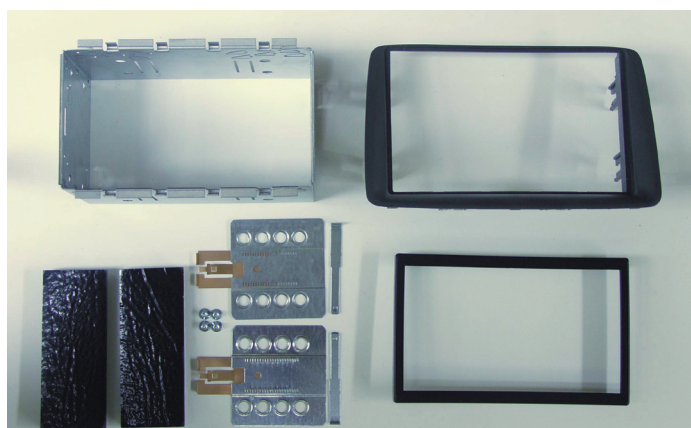


Clarion 2-DIN BKX-1094-01

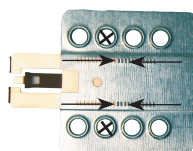
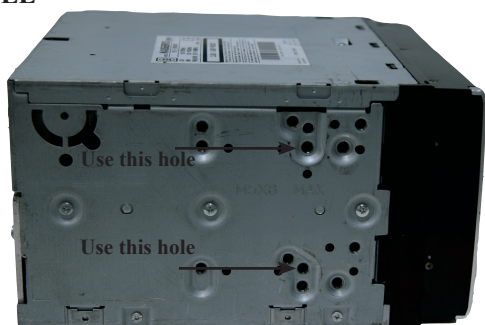
Installation manual for: Fiat Panda 2005 -->



Installation kit includes the following items:

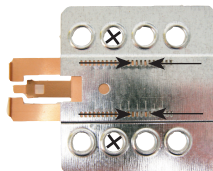
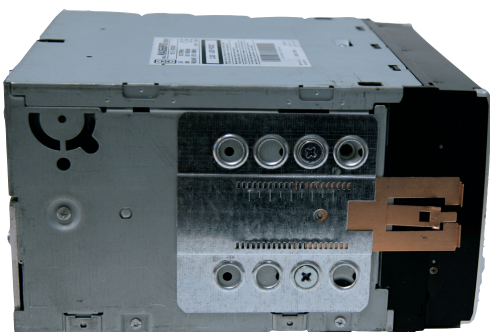
- * 1X 2-ISO 110 mm. metal bracket
- * 1X Replacement frame
- * 1X Radio trim
- * 2X Mounting plates
- * 2X Mounting spacers
- * 4X Screws
- * 2X Cushion

EXAMPLE



We advice to use the following positions.
Other positions are also possible.

Use position 2 marked with a cross.
Use position 9 & 11 marked with an arrow.
Measured from left to right.



We advice to use the following positions.
Other positions are also possible.

Use position 2 marked with a cross.
Use position 9 & 11 marked with an arrow.
Measured from left to right.

* Mount the plates.

Remark: The fixing position can be different between Audio and Multimedia unit!

clarion

2-DIN

BKX-1094-01

1



Car is equipped with original head unit

2



Remove the radio using Philips/
Blaupunkt radio keys.

3



Place the replacement panel.
Place the metal bracket.

4



Connect all wiring and place head
unit.

Connect all of the needed wiring harnesses and check the connections carefully.